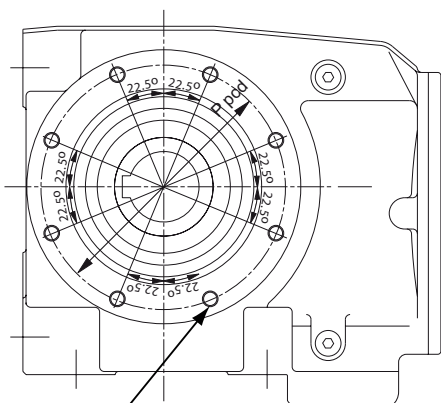
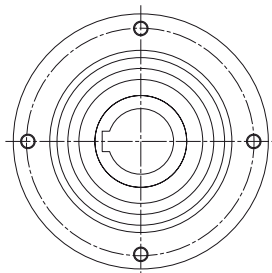


871, 872, 873 & 875
Eight hole pattern

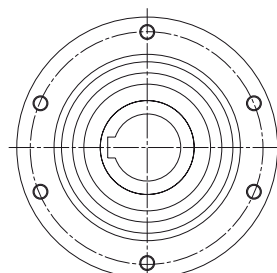


N Holes x ø F x D deep

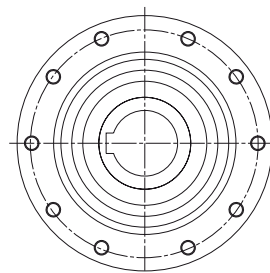
870
Four hole pattern



874 & 876
Six hole pattern



877
Ten hole pattern



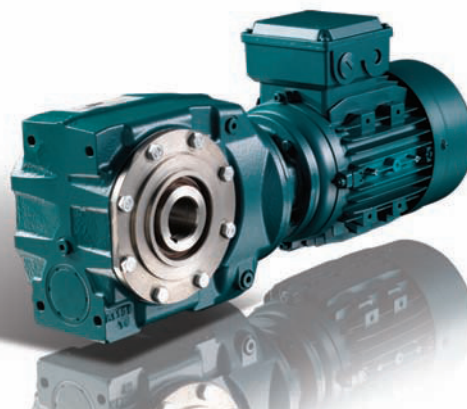
Size	P pcd	F Thread Diameter	N No of Holes	D Deep
870	90	M8 x 1.25	4	22
871	107	M8 x 1.25	8	22
872	130	M8 x 1.25	8	22
873	155	M10 x 1.5	8	27
874	150	M12 x 1.75	6	22
875	195	M12 x 1.75	8	21
876	230	M16 x 2.0	6	27
877	280	M16 x 2.0	10	27

Series C

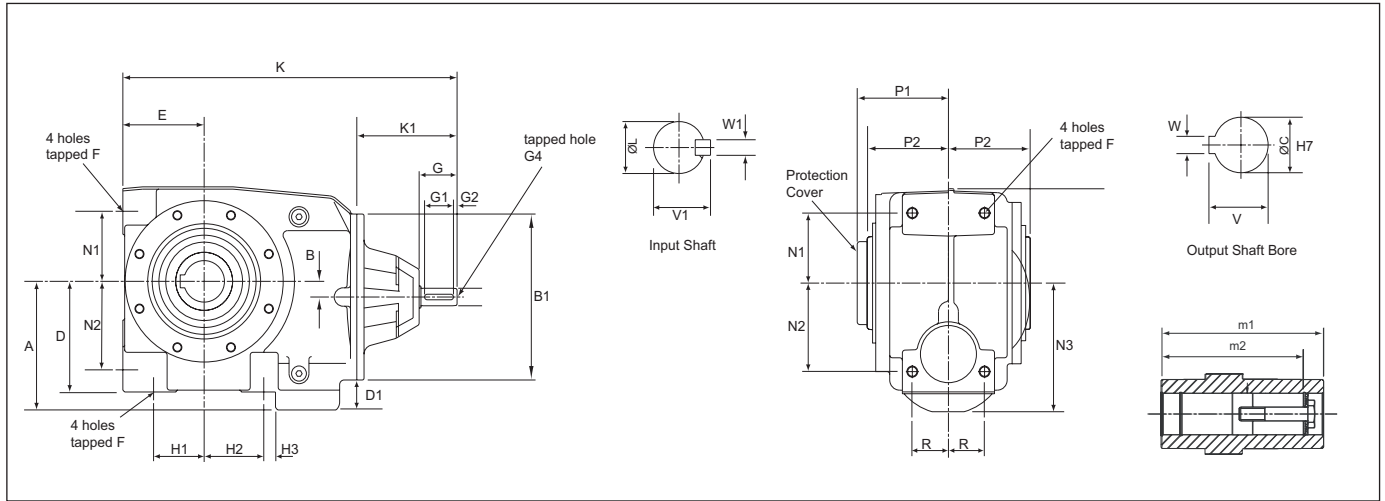
Highly Efficient, Versatile Compact Solutions

- Energy efficient right angled drive
- Dimensionally interchangeable with market leaders
- Versatile mounting
- Oil tight gearhead enables motor removal without modification
- Accepts standard IEC motors without modification
- Ratios from 8:1 to 13,500:1

Fenner[®]
THE LANGUAGE OF POWER TRANSMISSIONS

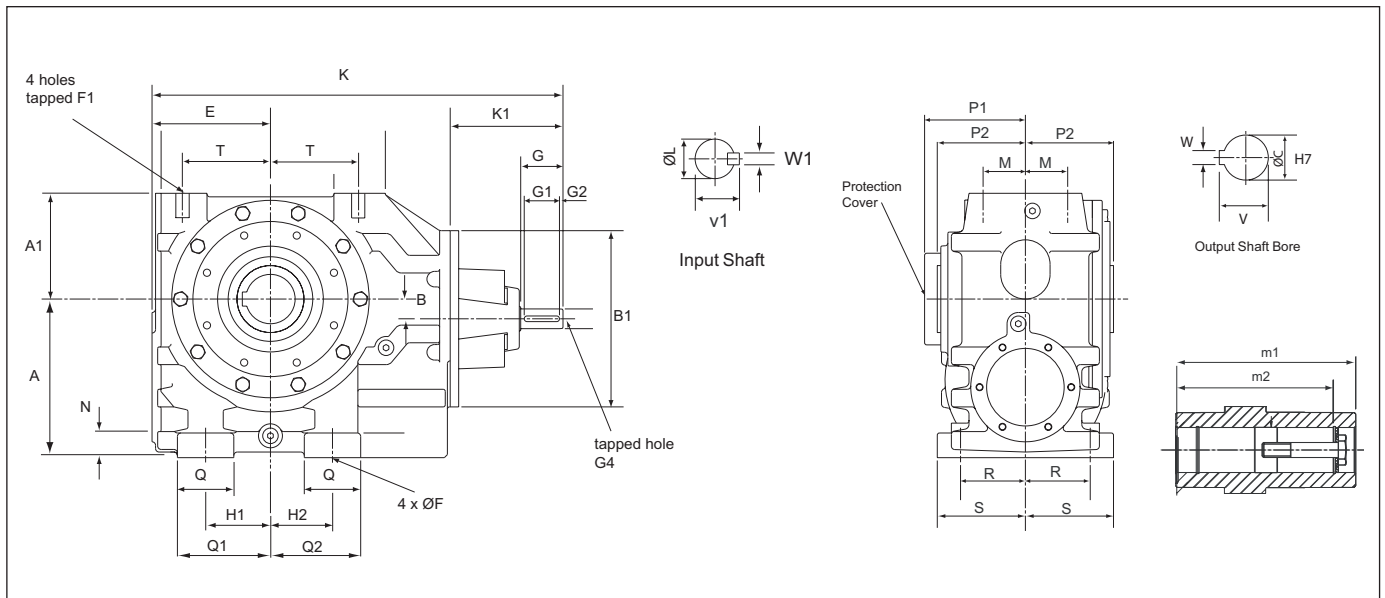


www.fptgroup.com



Unit Size	A	B	B1	C#	D	D1	E	F	G	G1	G2	G4	H1	H2	K		K1	L	m1	m2	N1	N2	N3	P1	P2	R	V	V1	W	W1
			H7												Double	Triple	k6													
870	80	5.3	140	20	71	9	54	M8X15	40	32	4	M5X12.5	35	28	274	330	111	16	124	104	40	40	79.5	70.0	62	27	22.9	18.5	6	5
871	100	15.0	140	30	86	7	64	M10X20	40	32	4	M5X12.5	35	45	293	349	111	16	130	122	53	65	93	74.0	65	28	33.5	18.5	8	5
872	112	13.0	140	35	96	16	68	M10X18	40	32	4	M5X12.5	45	55	313	369	111	16	140	127	65	77	112	74.5	70	34	38.5	18.5	10	5
873	140	17.0	180	45	120	20	90	M12X20	40	32	4	M6X16	60	70	370	436	111	19	180	156	76	96	139.5	101.0	90	40	49.0	21.5	14	6

Alternate bores are also available, see page 228.

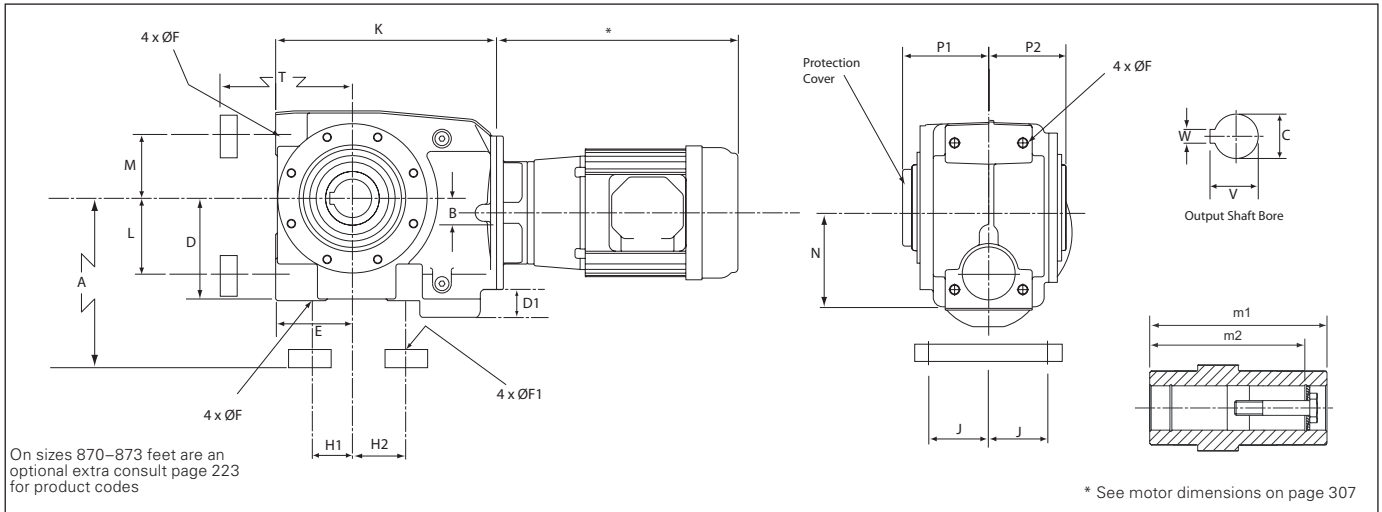


Unit Size	A	A1	B	B1	C#	M	E	F	F1	G	G1	G2	G4	H1	H2	K	K1	L	m1	m2	N	P1	P2	Q	Q1	Q2	R	S	T	V	V1	W	W1
					H7												k6																
874	180	122	26	212	60	50	143	18	M20X34	50	40	5	M8X19	75	60	478	115	24	218	188	28	124	109	67	108	94	60	93	108	64.6	27	18	8
875	225	150	28	250	70	60	168	22	M20X34	60	50	5	M10X22	92	88	583	160	28	250	220	35	143	125	80	132	128	112.5	125	125	75.1	31	20	8
876	280	177	40	300	90	67.5	195	26	M24X45	80	70	5	M12X28	115	120	690	195	38	300	265	40	169	150	85	157	163	140	153	145	95.6	41	25	10
877	335	230	65	360	100	75	235	26	M24X45	110	70	10	M16X36	170	140	823	233	42	350	313	45	198	175	110	225	195	167.5	180	173	106.6	45	28	12

* K dimension for 874 triple reduction unit is 560mm.

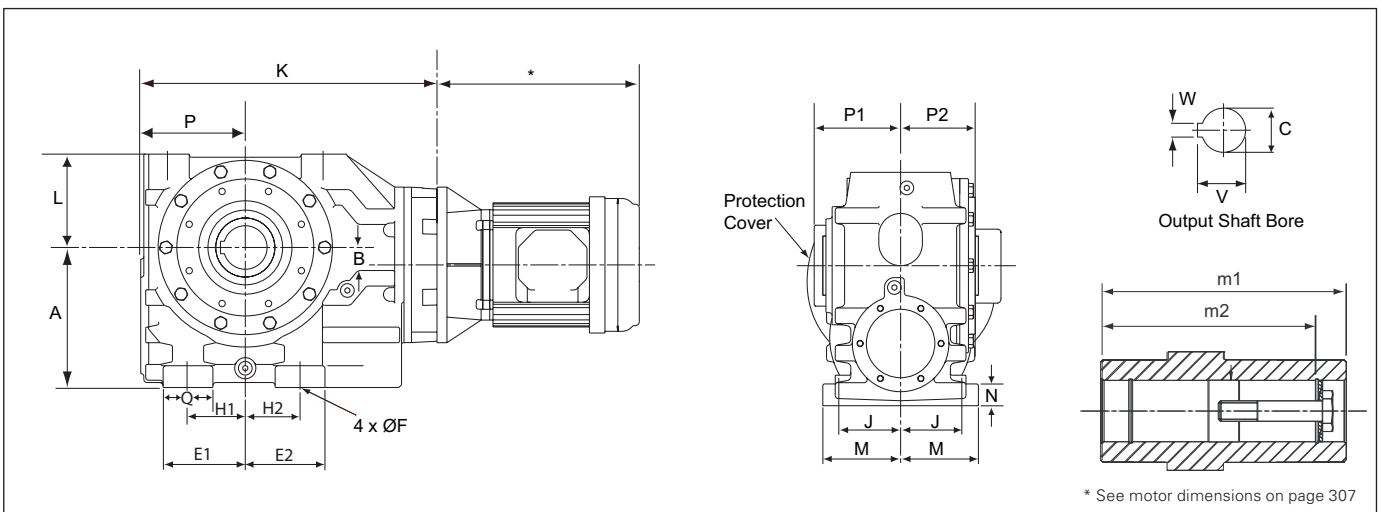
Alternate bores option available, see page 228.

Motorised Dimensions



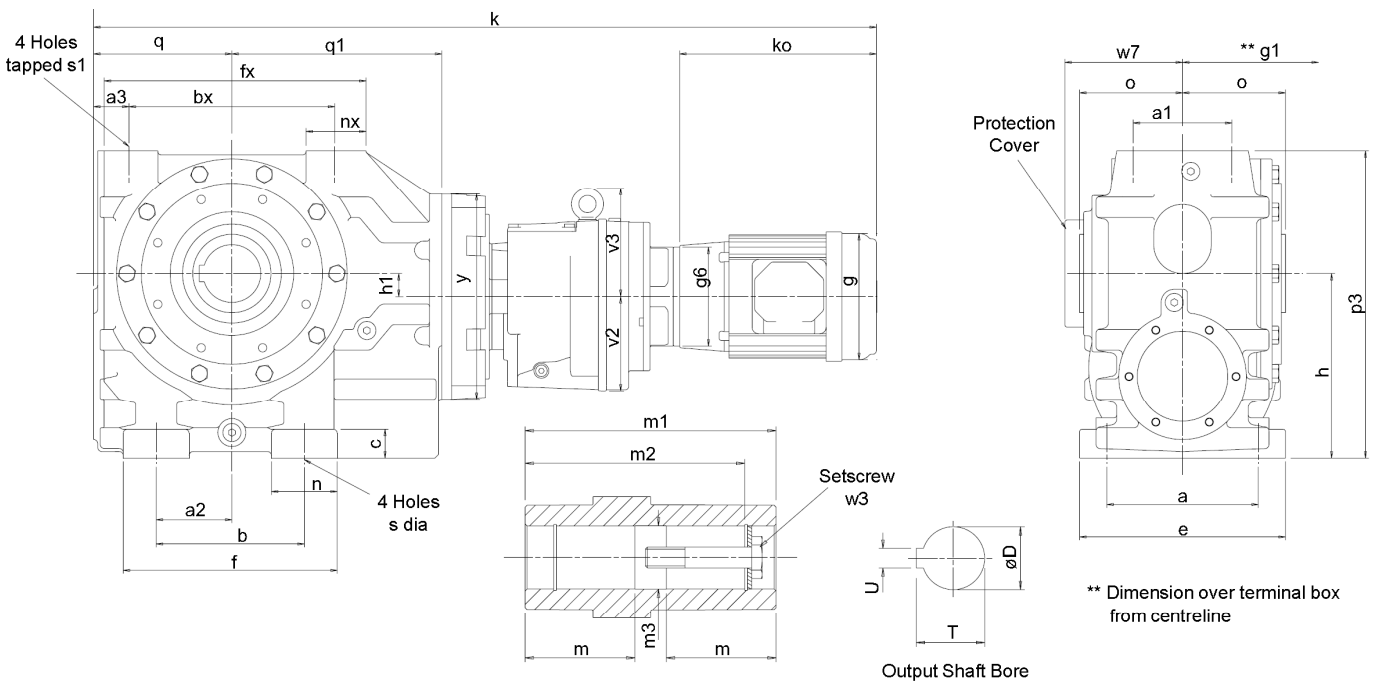
Unit Size	A	B	C H7 †	D	D1	E	F	F1	H1	H2	J	K DOUBLE REDUCTION						K Triple #	L	M	m1	m2	N	P1	P2	T	V	W
												MOTOR FRAME SIZE																
												63	71	80	90	100/112	132											
870	80	5.3	20	71	9	54	M8X15	9	35	28	45	197	201	214	224	213	-	56	40	40	124	104	70.5	70	57.0	63	22.9	6
871	100	15.0	30 (25)	86	7	64	M10X20	11	35	45	50	217	221	234	244	233	-	76	45	53	130	122	86.5	74.5	65.0	78	33.5	8
872	112	13.0	35 (30)	96	16	68	M10X18	11	45	55	55	236	240	253	263	252	-	95	77	65	140	127	96.5	79	70.0	84	38.5	10
873	140	17.0	45 (40)	120	20	90	M12X20	14	60	70	65	271	277	295	305	332	331	163	96	76	180	156	119.5	101	90.5	110	49.0	14

This value should be added to K Double Reduction value in the table above.
 † Dimensions in brackets are the alternative bore sizes available on request.



Unit Size	A	B	C H7 †	E1	E2	F	H1	H2	J	K DOUBLE REDUCTION								K Triple #	L	M	m1	m2	N	P	P1	P2	Q	V	W
										MOTOR FRAME SIZE																			
										80	90	100/112	132	160/180	200	225													
874	180	26	60(50)	108	93	18	75	60	75	400	410	421	444	452	—	—	80	122	93	218	188	28	143	125	109	67	64.6	18	
874 Triple										479	489	516	515	—	—														
875	225	28	70(60)	132	128	22	92	88	100	470	470	476	476	506	—	—	N/A	150	119	250	220	35	168	143	125	80	75.1	20	
876	280	40	90(70)	157	162	26	115	120	125	553	553	559	559	594	594	621	N/A	177	153	300	265	40	195	169	150	85	95.6	25	
877	335	65	100(80)	225	195	26	170	140	150	—	—	637	637	672	672	699	N/A	230	180	350	313	45	235	198	175	110	106.6	28	

This value should be added to K Double Reduction value in the table above.
 † Dimensions in brackets are the alternative bore sizes available on request.



SIZE	a	a1	a2	a3	b	bx	c	e	f	fx	h	h1		nx	o	p3	q	q1
874	150	100	75	35.5	135	215	28	185	202	280	180	26	67	63	109	302	143	220
875	200	120	92	43	180	250	35	250	260	326	225	28	80	71	125	375	168	255
876	250	135	115	50	235	290	40	305	320	380	280	40	85	85	150	457	195	300
877	300	150	170	62.5	310	345	45	360	420	460	335	65	110	107	175	565	235	355

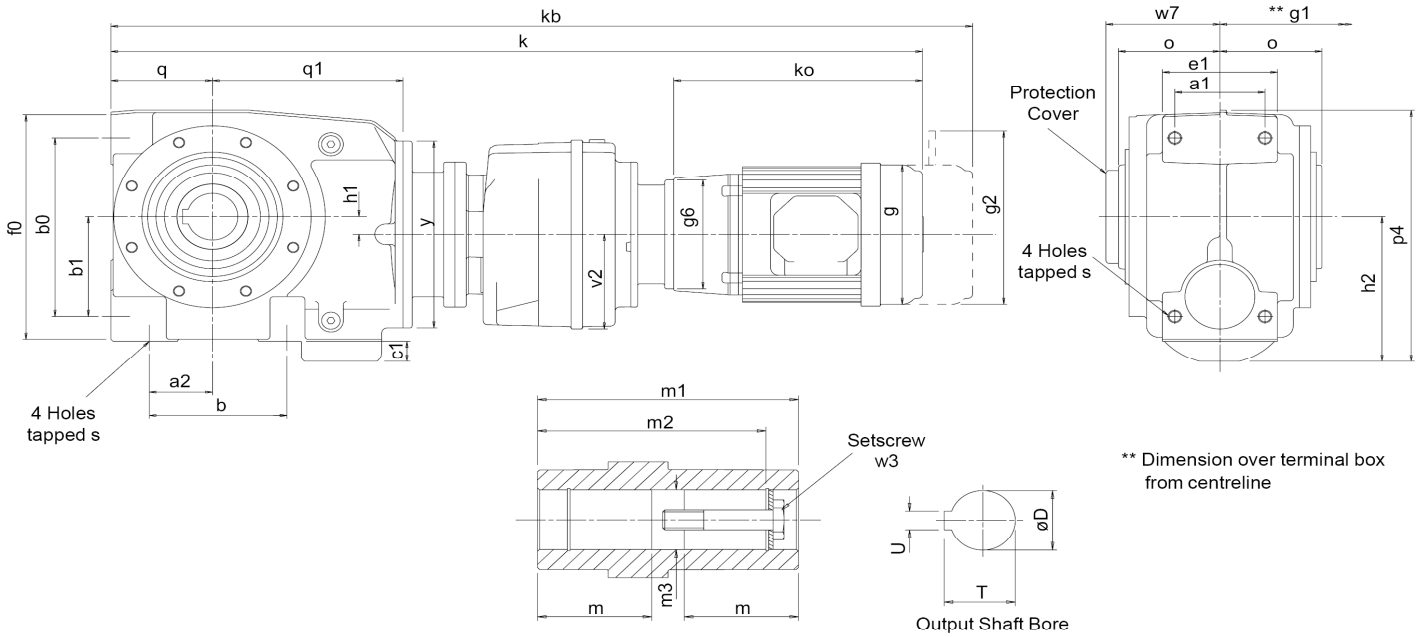
SIZE	s	s1	v2	v3	w7	y	Hollow Output Bore							
							D	m	m1	m2	m3	T	U	w3
874	18	M20x2.5, 34 deep	91	-	125	212	60	79	218	188	60.5	64.6	18	M20x2.5, 80 long
875	22	M20x2.5, 34 deep	115	-	143	250	70	90	250	220	70.5	75.1	20	M20x2.5, 80 long
876	26	M24x3, 45 deep	115	-	169	300	90	107.5	300	265	90.5	95.6	25	M24x3.0, 110 long
877	26	M24x3, 45 deep	140	155	198	360	100	132.5	350	313	100.5	106.6	28	M24x3.0, 110 long

Motor Frame Size	All Sizes					874		875		876		877	
	ko	g	g1**	g2	g6	k	kb	k	kb	k	kb	k	kb
63	218	122	96	160	140	818	863	904	949	987	1032	1100	1145
71	221	138	102	167	160	825	869	913	957	996	1040	1103	1147
80A	239	157	125	190	200	856	908	949	1001	1032	1084	1158	1210
80B	248	157	125	190	200	865	917	958	1010	1041	1093	1167	1219
90S	260	177	133	218	200	887	939	980	1032	1063	1115	1189	1241
90L	275	177	133	218	200	902	954	995	1047	1078	1130	1204	1256
90LA	284	177	133	218	200	911	963	1004	1056	1087	1139	1213	1265
100L	310	197	144	238	250	926	986	1057	1117	1140	1200	1250	1310
112M	325	219	155	238	250	941	1015	1072	1146	1155	1229	1265	1339
112MA	344	219	155	238	250	960	1035	1091	1166	1174	1249	1284	1359
132SA	392	235	172	288	300	-	-	1138	1221	1221	1304	1355	1438
132M	412	235	172	288	300	-	-	1158	1241	1241	1324	1375	1458
132MA	436	235	172	288	300	-	-	1182	1265	1265	1348	1399	1482
132MB	472	235	172	288	300	-	-	1218	1301	1301	1384	1435	1518
160M	455	273	282	323	350	-	-	-	-	-	-	1426	1509
160L	500	273	282	323	350	-	-	-	-	-	-	1471	1554

*Motor Lengths for standard motors. These lengths may vary if alternative motor is fitted.

**Dimension over terminal box from centreline

Quadruple Reduction



SIZE	a1	a2	b	b0	b1	c1	e1	f0	h1	h2	o	p4	q	q1
870	54	35	63	80	40	9	70	139	5.3	79.5	62	148	54	109
871	56	35	80	118	65	7	80	158	15	93	65	168	64	119
872	68	45	100	142	77	16	86	177	13	112	70	200	68	134
873	80	56	122	172	96	20	102	218	17	139.5	90	243	90	169

SIZE	s	v2	w7	y	Hollow Output Bore							
					D	m	m1	m2	m3	T	U	w3
870	M8x1.25, 15 deep	76	70	140	20	52	124	104	20.2	22.9	6	M6x1.0, 40 long
871	M10x1.5, 20 deep	76	74.5	140	30	54	130	122	30.2	33.5	8	M10x1.5, 50 long
872	M10x1.5, 18 deep	76	79	140	35	56	140	127	35.3	38.5	10	M12x1.75, 55 long
873	M12x1.75, 20 deep	91	101	180	45	70	180	156	45.3	49	14	M16x2.0, 70 long

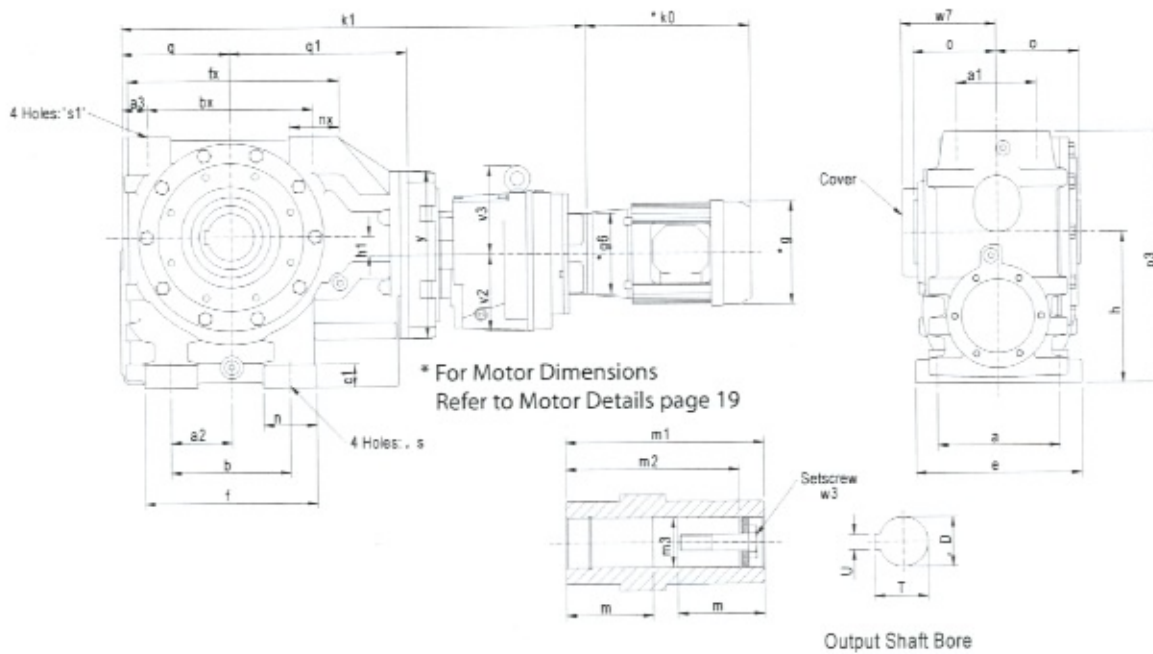
Motor Frame Size	All Sizes					870		871		872		873	
	ko	g	g1**	g2	g6	k	kb	k	kb	k	kb	k	kb
63	218	122	96	160	140	601	646	621	666	640	685	713	758
71	221	138	102	167	160	608	652	628	672	647	691	720	764
80A	239	157	125	190	200	639	691	659	711	678	730	751	803
80B	248	157	125	190	200	648	700	668	720	687	739	760	812
90S	260	177	133	218	200	670	722	690	742	709	761	782	834
90L	275	177	133	218	200	685	737	705	757	724	776	797	849
90LA	284	177	133	218	200	694	746	714	766	733	785	806	858
100L	310	197	144	238	250	709	769	729	789	748	808	821	881
112M	325	219	155	238	250	724	798	744	818	763	837	836	910
112MA	344	219	155	238	250	743	818	763	838	782	857	855	930

*Motor Lengths may vary if alternative motor is fitted.

**Dimension over terminal box from centreline

SERIES C

DIMENSIONS QUADRUPLE REDUCTION



SIZE	a	a1	a2	a3	b	bx	c	e	f	fx	h	h1		nx	o	p3	q	q1
C0741	150	100	75	35.5	135	215	28	185	202	280	180	26	67	63	109	302	143	220
C0841	200	120	92	43	180	250	35	250	260	326	225	28	80	71	125	375	168	255
C0941	250	135	115	50	235	290	40	305	320	380	280	40	85	85	150	457	195	300
C1041	300	150	170	62.5	310	345	45	360	420	460	335	65	110	107	175	565	235	355

SIZE	s	s1	v2	v3	w7	y	Hollow Output Bore							
							D	m	m1	m2	m3	T	U	w3
C0741	18	M20x2.5, 34 deep	91	-	125	212	60	79	218	188	60.5	64.6	18	M20x2.5, 80 long
C0841	22	M20x2.5, 34 deep	115	-	143	250	70	90	250	220	70.5	75.1	20	M20x2.5, 80 long
C0941	26	M24x3, 45 deep	115	-	169	300	90	107.5	300	265	90.5	95.6	25	M24x3.0, 110 long
C1041	26	M24x3, 45 deep	140	155	198	360	100	132.5	350	313	100.5	106.6	28	M24x3.0, 110 long

IEC Motor Frame Size	C0741	C0841	C0941	C1041
	k1	k1	k1	k1
63	600	680	763	-
70	604	686	769	-
80	617	704	787	919
90	627	714	797	929
100	635	741	824	941
112	635	741	824	941
132	-	741	824	963
160	-	-	-	971